

HNF1A Antibody (Center)
Purified Rabbit Polyclonal Antibody (Pab)
Catalog # AP8717c**Specification**

HNF1A Antibody (Center) - Product Information

| | |
|-------------------|---|
| Application | IF, WB,E |
| Primary Accession | P20823 |
| Other Accession | P15257 , P22361 |
| Reactivity | Human, Mouse |
| Predicted | Rat |
| Host | Rabbit |
| Clonality | Polyclonal |
| Isotype | Rabbit IgG |
| Calculated MW | 67386 |
| Antigen Region | 177-205 |

HNF1A Antibody (Center) - Additional Information**Gene ID** 6927**Other Names**

Hepatocyte nuclear factor 1-alpha, HNF-1-alpha, HNF-1A, Liver-specific transcription factor LF-B1, LFB1, Transcription factor 1, TCF-1, HNF1A, TCF1

Target/Specificity

This HNF1A antibody is generated from rabbits immunized with a KLH conjugated synthetic peptide between 177-205 amino acids from the Central region of human HNF1A.

Dilution

IF~~1:10~50

WB~~1:1000

E~~Use at an assay dependent concentration.

Format

Purified polyclonal antibody supplied in PBS with 0.09% (W/V) sodium azide. This antibody is purified through a protein A column, followed by peptide affinity purification.

Storage

Maintain refrigerated at 2-8°C for up to 2 weeks. For long term storage store at -20°C in small aliquots to prevent freeze-thaw cycles.

Precautions

HNF1A Antibody (Center) is for research use only and not for use in diagnostic or therapeutic procedures.

HNF1A Antibody (Center) - Protein Information

Name HNF1A

Synonyms TCF1

Function Transcriptional activator that regulates the tissue specific expression of multiple genes, especially in pancreatic islet cells and in liver (By similarity). Binds to the inverted palindrome 5'-GTTAATNATTAAC-3' (PubMed:[10966642](#), PubMed:[12453420](#)). Activates the transcription of CYP1A2, CYP2E1 and CYP3A11 (By similarity).

Cellular Location

Nucleus {ECO:0000255|PROSITE-ProRule:PRU00108, ECO:0000269|PubMed:10966642, ECO:0000269|PubMed:38018242}

Tissue Location

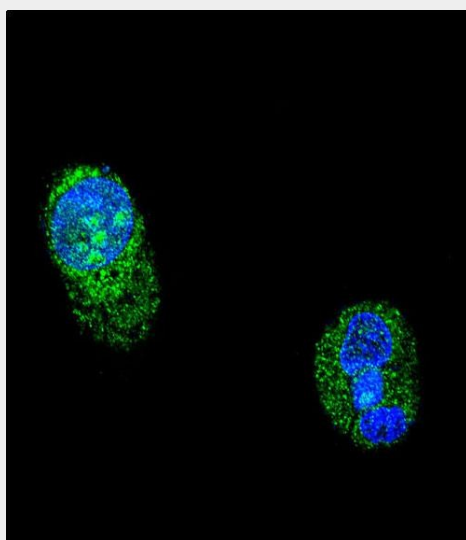
Liver.

HNF1A Antibody (Center) - Protocols

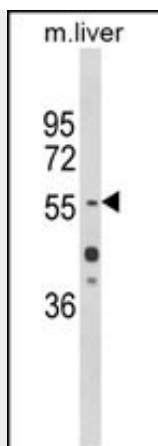
Provided below are standard protocols that you may find useful for product applications.

- [Western Blot](#)
- [Blocking Peptides](#)
- [Dot Blot](#)
- [Immunohistochemistry](#)
- [Immunofluorescence](#)
- [Immunoprecipitation](#)
- [Flow Cytometry](#)
- [Cell Culture](#)

HNF1A Antibody (Center) - Images



Confocal immunofluorescent analysis of HNF1A Antibody (Center)(Cat#AP8717c) with HepG2 cell followed by Alexa Fluor® 488-conjugated goat anti-rabbit IgG (green). DAPI was used to stain the cell nuclear (blue).



Western blot analysis of HNF1A Antibody (Center) (Cat. #AP8717c) in mouse liver tissue lysates (35ug/lane). HNF1A (arrow) was detected using the purified Pab.

HNF1A Antibody (Center) - Background

HNF1A is a transcription factor required for the expression of several liver-specific genes. This protein functions as a homodimer and binds to the inverted palindrome 5'-GTTAATNATTAAC-3'.

HNF1A Antibody (Center) - References

Bach,I., et.al., Genomics 8 (1), 155-164 (1990)